

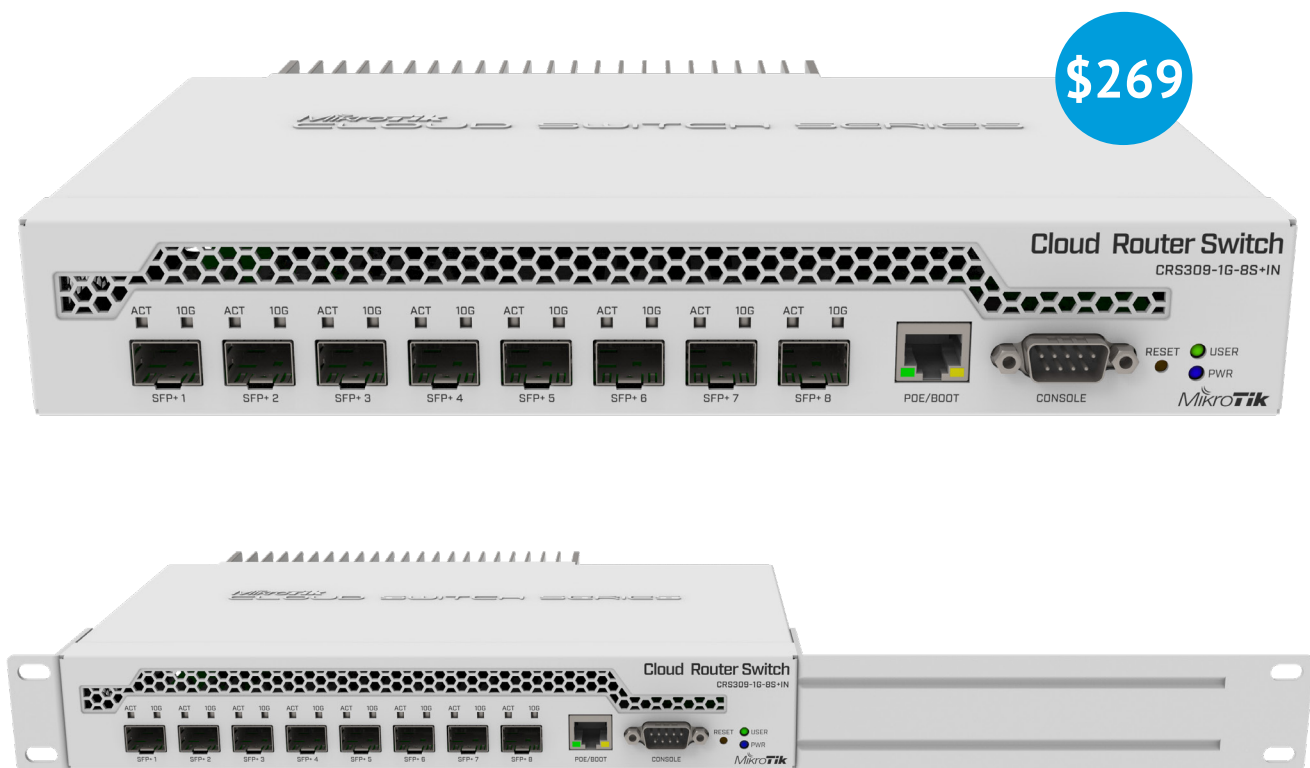
- CRS309-1G-8S+IN switch with 8 SFP+ ports
- wAP 60Gx3 60 GHz sector base station
- LHG Lite60
- InterCell LTE base stations

- Active direct attach 5m cable
- Rackmount ears for RB4011
- MUM schedule

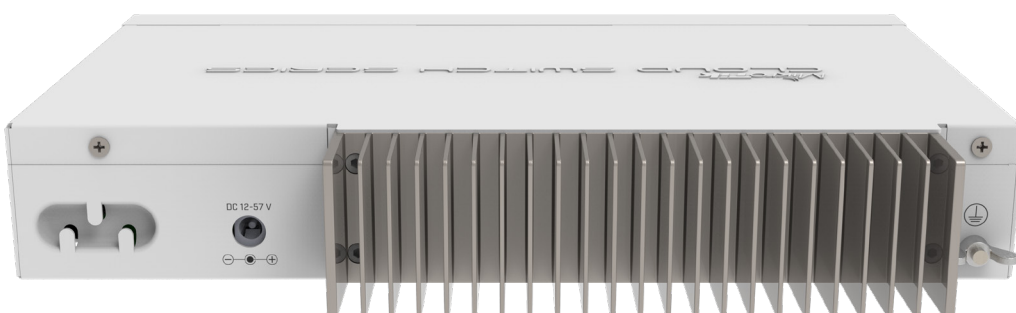
CRS309-1G-8S+IN switch with 8 SFP+ ports

The CRS309-1G-8S+ is a very compact, yet powerful networking switch. It has eight SFP+ slots, supporting up to 10 Gbit module in each, which results in a total switching capacity of 162 Gbps and total non-blocking throughput of 81 Gbps.

The device also has dual-core 800 MHz CPU, 512 MB RAM, a management Ethernet port with PoE power input, RS232 serial port, a grounding terminal and is capable of dual boot (choose which operating system you prefer, RouterOS, or SwOS).



The compact and sleek metallic enclosure also acts as a heatsink, making this device passively cooled - no fan noise and no dust accumulation inside. Special rackmount ears for installing unit into the standard rack are provided.



[View online](#)

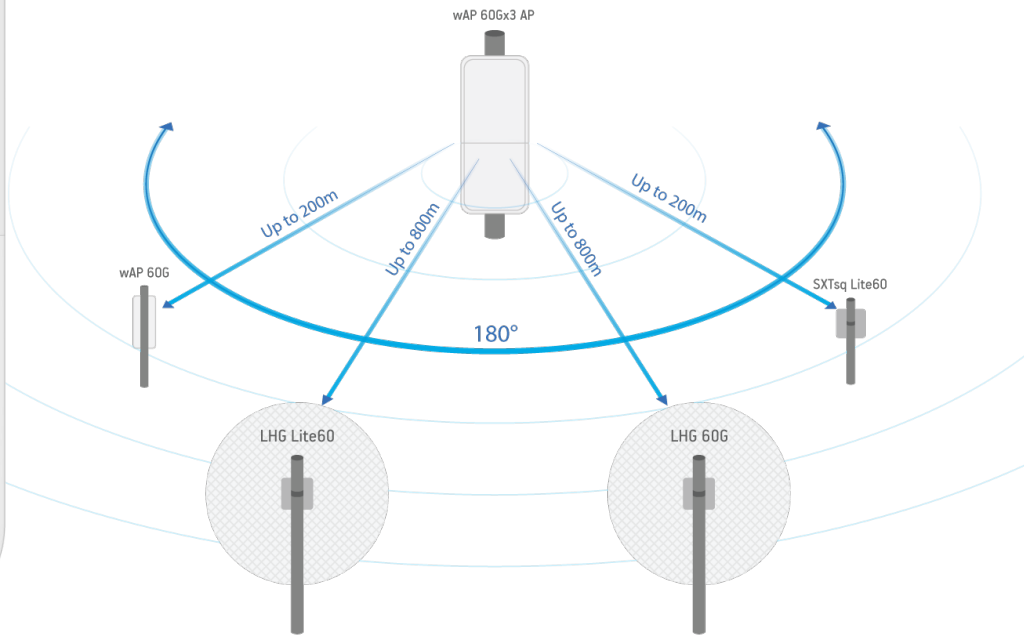
wAP 60Gx3 60 GHz sector base station

The wAP 60Gx3 AP is a new access point model for the 60 GHz spectrum. It uses breakthrough antenna design, that consist of 96 elements to provide unprecedented 180 degree beam-forming coverage (three times bigger than regular wAP 60G AP!) for up to eight 60 GHz client devices at the same time.

\$199

Build a cost effective point to multipoint setup in the clean 60 GHz wireless spectrum, at a fraction of the cost.

Two wAP 60Gx3 AP units can be used in point-to-point configurations as well.



2x plastic straps



Screw kit



24 V 0.38 A power adapter



Mount bracket



Gigabit PoE injector



Metal ring

[View online](#)

LHG Lite60

The LHG Lite60 is a new model in our 60 GHz lineup. This is a low cost CPE unit for connecting to a 60 GHz AP at longer distances, enabling you to build a cost effective point to multipoint setup in the clean 60 GHz wireless spectrum.



\$99



PoE injector



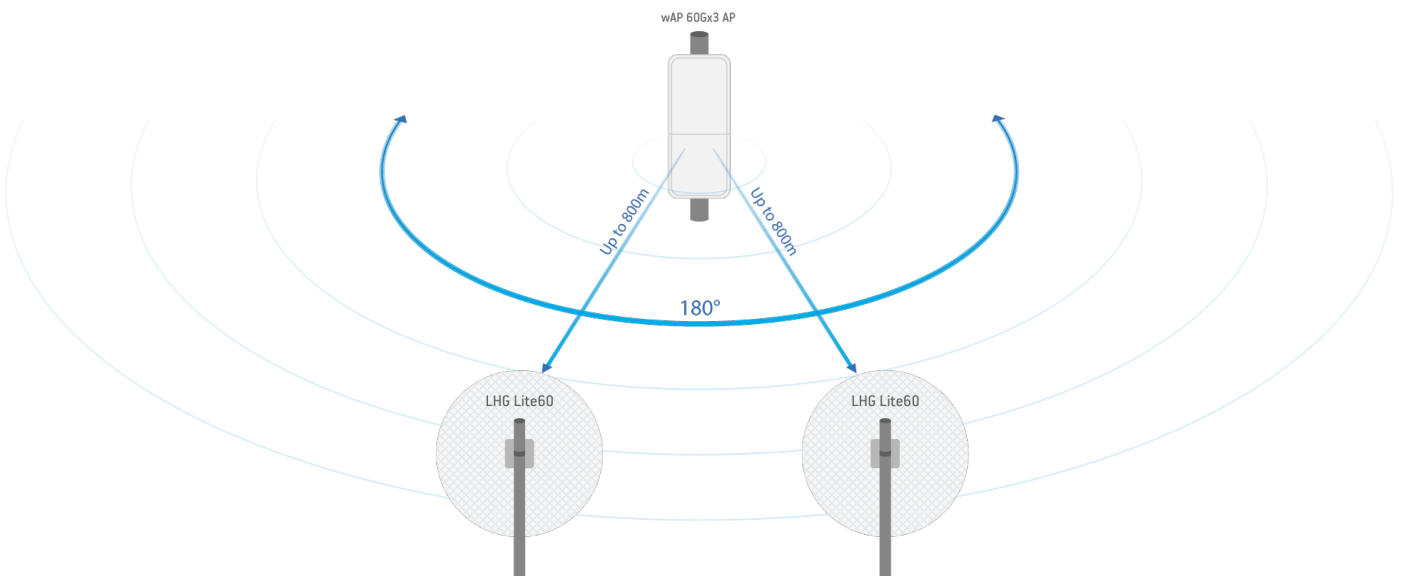
24 V 0.38 A
power adapter



Mounting kit

[View online](#)

Connect up to eight of these CPE units to a 60 GHz access point, such as our wAP 60Gx3 AP. For links up to 800 meters, this is the best alternative for wireless connections where 2 and 5 GHz wireless space is crowded and unreliable, at a fraction of the cost. Lightweight, compact and very affordable, this is a 60 GHz device like no other before.



InterCell - LTE base station and client solutions

The MikroTik InterCell base station devices give you the ability to quickly expand an existing LTE solution, or even launch a new LTE mobile operator without the usual expense, infrastructure and size requirements.

The InterCell outdoor device series includes several models, choose the best option depending on the required frequency band configuration. The devices support output power of up to 10W, providing city-wide coverage.

The new InterCell series by MikroTik are small LTE base stations which support up to 192 LTE client devices each. This is a perfect low-cost solution for ISPs, mobile operators and other businesses, that need to provide internet connectivity using LTE standard.

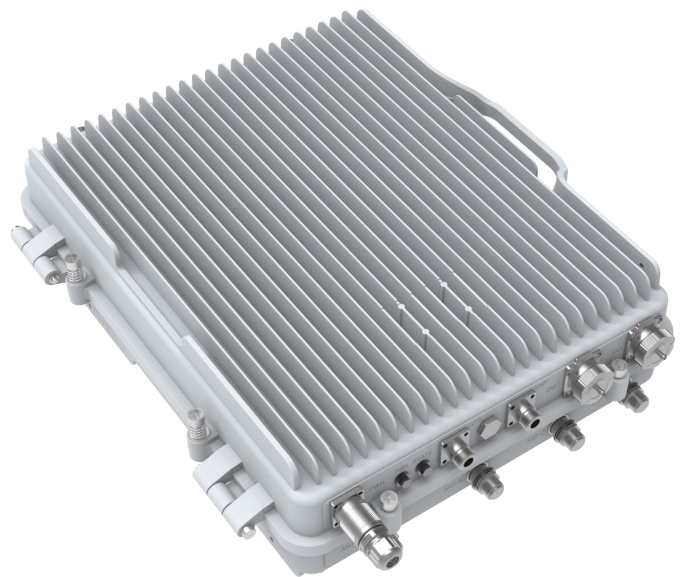
The units have features such as -48V telecom powering, dual SFP ports, dual Gigabit Ethernet ports, a built-in lightning arrestor and even supports EPC, working completely stand-alone (no central network core required) with up to 256 clients.

LTE base stations

Four base station models are available:

- InterCell 10 B38+B39 (Dual Carrier, Bands 38 + 39)
List price \$3,500
- InterCell 10 B38+B38 (Dual Carrier, Band 38 + 38)
List price \$3,500
- InterCell 10 B38 (Single Carrier, Band 38)
List price \$2,200
- InterCell 10 B39 (Single Carrier, Band 39)
List price \$2,200

The first InterCell production batch will be ready on June 2019. To get items from the first batch, please place an order with your favorite MikroTik Distributor (<https://mikrotik.com/buy>) until February 8th!



LTE CPE

The following MikroTik devices are fully compatible with the InterCell series of base stations:

- wAP LTE kit - \$119
- LtAP mini LTE kit - \$129
- SXT LTE kit - \$129
- LHG LTE kit - \$159



[More information](#)

Active direct attach 5m cable

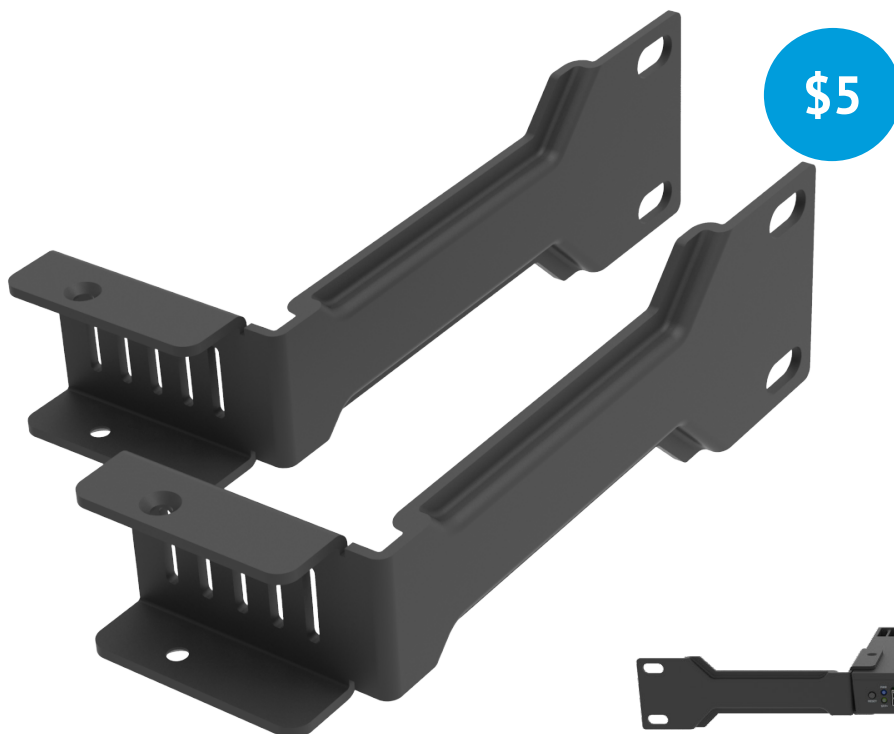
5m SFP+ 10Gbps Active Optics direct attach cable. This is highly cost-effective way to connect two SFP/SFP+ devices for very short distances, within racks and across adjacent racks. It works with all our products with SFP/SFP+ ports, including new RB4011 series (RB4011 series are not compatible with our passive direct attach cables S+DA0001 and S+DA0003)



[View online](#)

Rackmount ears for RB4011

Rackmount ears for RB4011 series, for installing units in standard rack.



[View online](#)



Upcoming MUM events in 2019



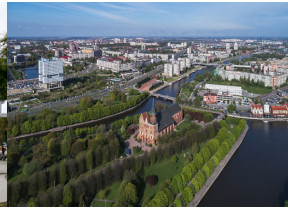
Lima, Peru, February 08, 2019



Santiago, Chile, February 11, 2019



Rostov-on-Don, Russia, March 22, 2019



Kaliningrad, Russia, March 26, 2019



Austin, USA, April 04 - 05, 2019



Mexico City, Mexico, April 08 - 09, 2019



Paris, France, April 26, 2019



Amsterdam, Netherlands, April 29, 2019



Bogota, Colombia, August 09, 2019



Kuta, Bali, Indonesia, October 24 - 25, 2019

MUM Europe 2019 in Austria

MUM Europe 2019 will take place on March 7-8th in Vienna, Austria. This is our main event of the year, where we announce our roadmap for next 12 months and demonstrate our new products. We expect more than 1,500 participants from 70+ countries. Mark the date in the calendar, looking forward to see you there!



[More information](#)